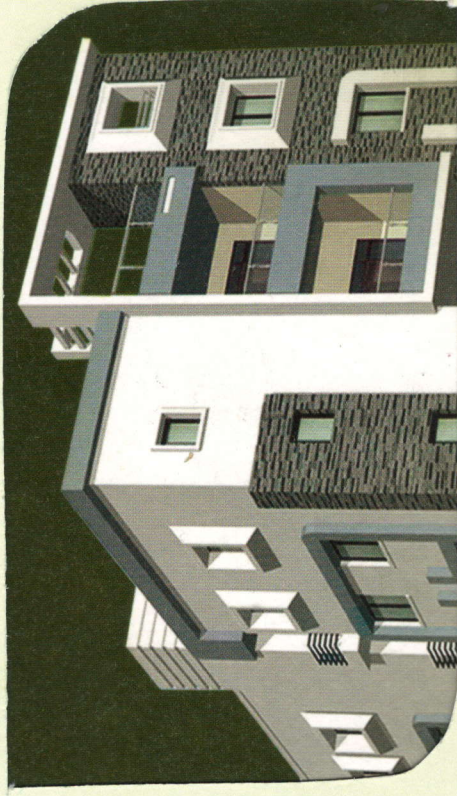




BLUESTONE



Super deluxe with Italian marble



Re-discover
your serenity

PLUMBING & SANITARY

Water supply : ISI Mark of G/I Kemlast/ CPVC piping or equivalent.
Drainage : ISI Mark of PVC/SWG Sanitary piping.

ELECTRICAL

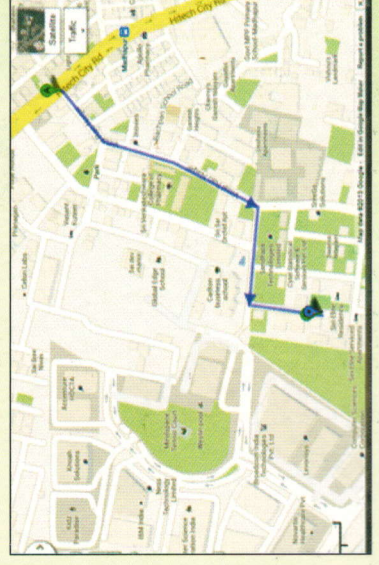
: 3-phase supply for each unit and individual meter in panel room.
Concealed copper wiring of finolex, RR cables, polycab or equivalent make, in conduits for lights, fan and power plug points wherever necessary.
Power outlets for air-conditioners in all bedrooms.
Miniature circuit breakers (MCB) of ISI Mark.
Switches are of Legrand/ Clipsal /Anchor or equivalent make.
Cable TV : Cable conduits in living room & Master bed room.
Internet : Provision for high speed internet cable for each flat.
LIFT : 6 passengers automatic lift of Johnson/ kone or equivalent make.
SECURITY : Video door phone in each flat connected to main security room.

COMMON FACILITIES

: Water connection
Electricity connection
DG Set for all the electric points in flat, common areas & lift.
Bore well, underground tank, overhead tank.
Anti termite treatment with 8 years warranty.
Water softener plant
24 hour Security

Distance Chart

- Hotel Westin - 250 Meters
- Raheja Mindspace IT SEZ - 500 Meters
- Metro Raif - 1 Km
- Inorbit Mall - 2 Kms
- Hitech City - 3 Kms

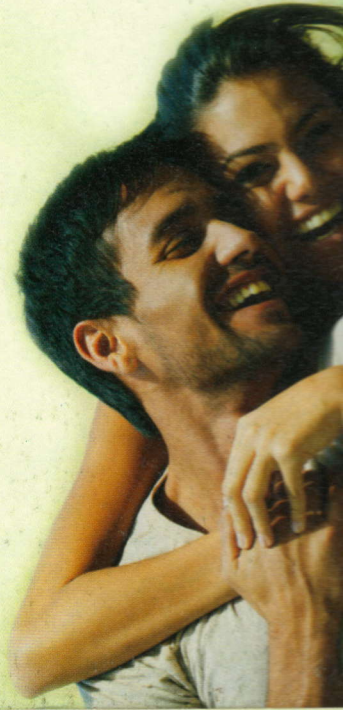
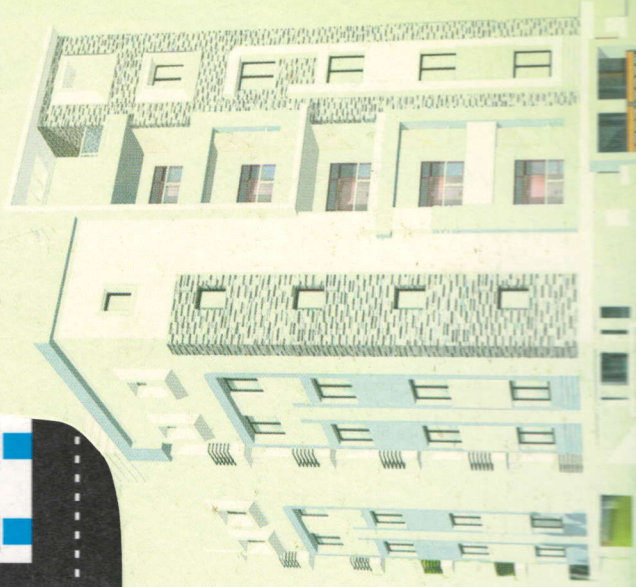
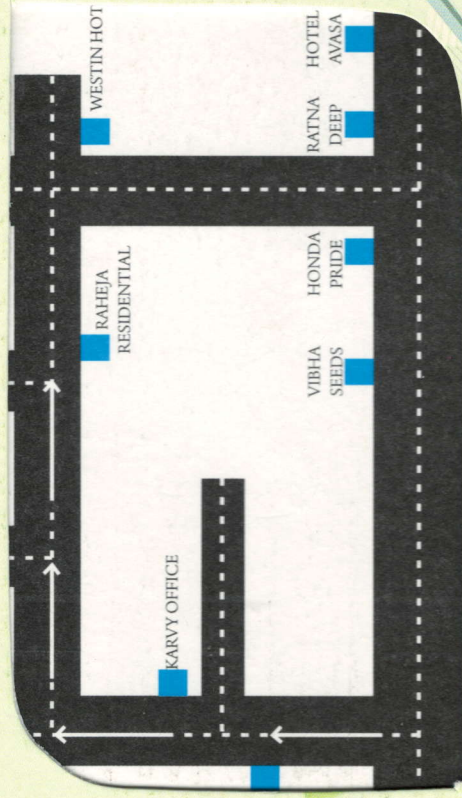


Specifications

<u>STRUCTURE</u>	:	Earthquake Resistant –R.C.C. framed structure in accordance with IS Code.
<u>SUPER STRUCTURE</u>	:	9" External wall and 4 ½" Internal walls with red bricks or first class molded Clay bricks in cement mortar.
<u>PLASTERING</u>	:	Double coat of cement plastering for smooth finish.
<u>Internal & external</u>	:	
<u>DOORS</u>	:	B.T. Wood frame flush shutter with veneer on both sides and melamine finish with brass hardware.
<u>Main Door</u>	:	M.T. Wood frame with two sides laminated & flush shutters.
<u>Internal</u>	:	Option of Aluminum / Wood Windows
<u>WINDOWS</u>	:	
<u>PAINTING</u>	:	
<u>External</u>	:	Birla putty and texture/emulsion paints of Asian/ ICI or equivalent make.
<u>Internal & Ceiling</u>	:	Lypsum plaster finish, two coats of Acrylic emulsion over a coat of primer.
<u>FLOORING</u>	:	
<u>Rooms</u>	:	Johnson/Somany or equivalent Vitrified tiles.
<u>Drawing & Dining Room</u>	:	Italian Marble
<u>Bathrooms,</u>	:	
<u>Utility and Balconies</u>	:	Anti Skid finish tiles.
<u>Parking area</u>	:	Cement based tiles over PCC bed.
<u>Corridors and</u>	:	
<u>Staircase lift lobbies</u>	:	Granite/marble flooring.
<u>TILE CLADDING AND DADOING</u>	:	
<u>Kitchen</u>	:	Glazed ceramic tile dado up to ceiling height above kitchen platform. Granite platform with stainless steel sink & provision for fixing aqua-guard. Provision for chimney & Microwave.
<u>Utility/wash</u>	:	Glazed Ceramic Tiles dado up to 3ft.height. Provision for washing machine.
<u>Toilets</u>	:	Tile dado up to ceiling. Counter top wash basin of Hindware/ Cera or an equivalent make. Cascade floor mount W.C. of Hindware/ Cera or an equivalent make.

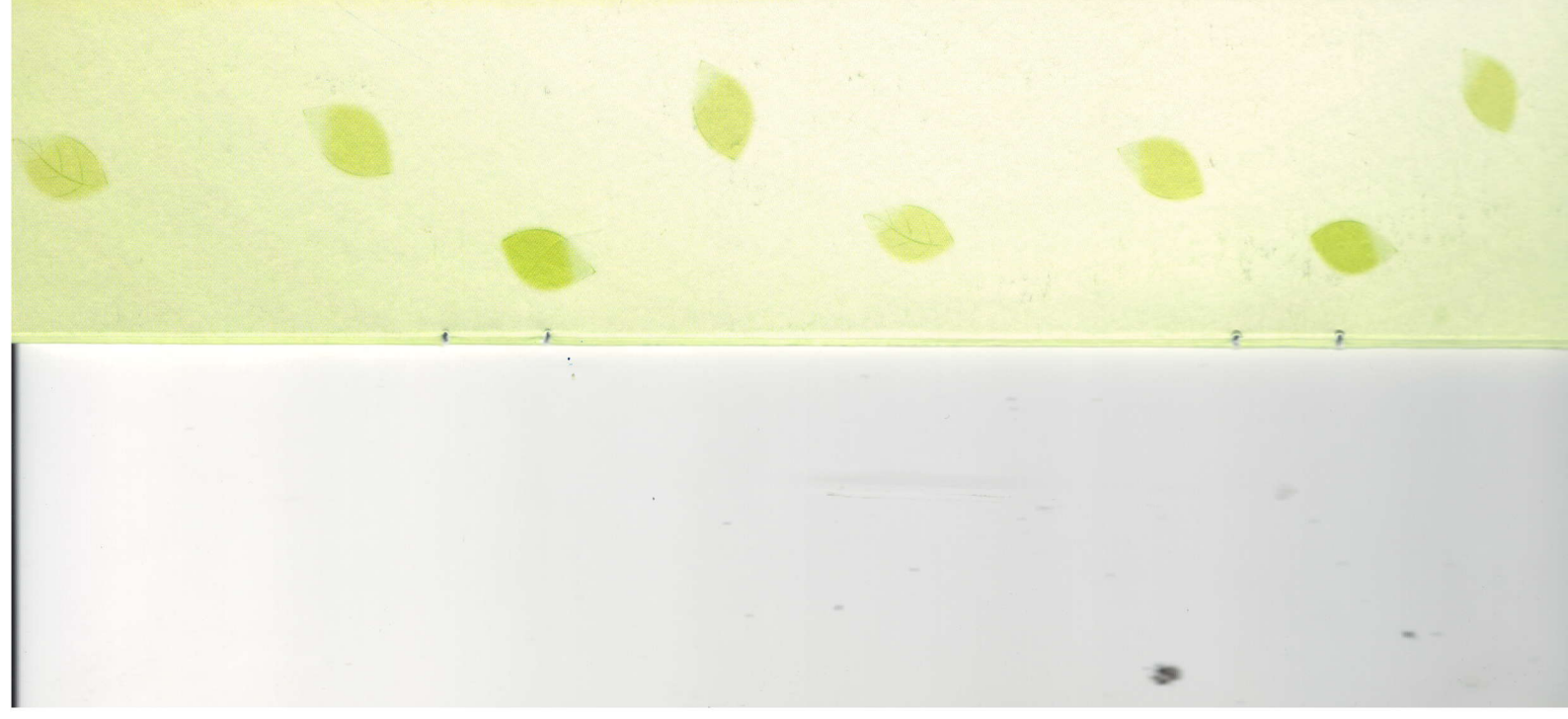


The utmost bliss
of your life...

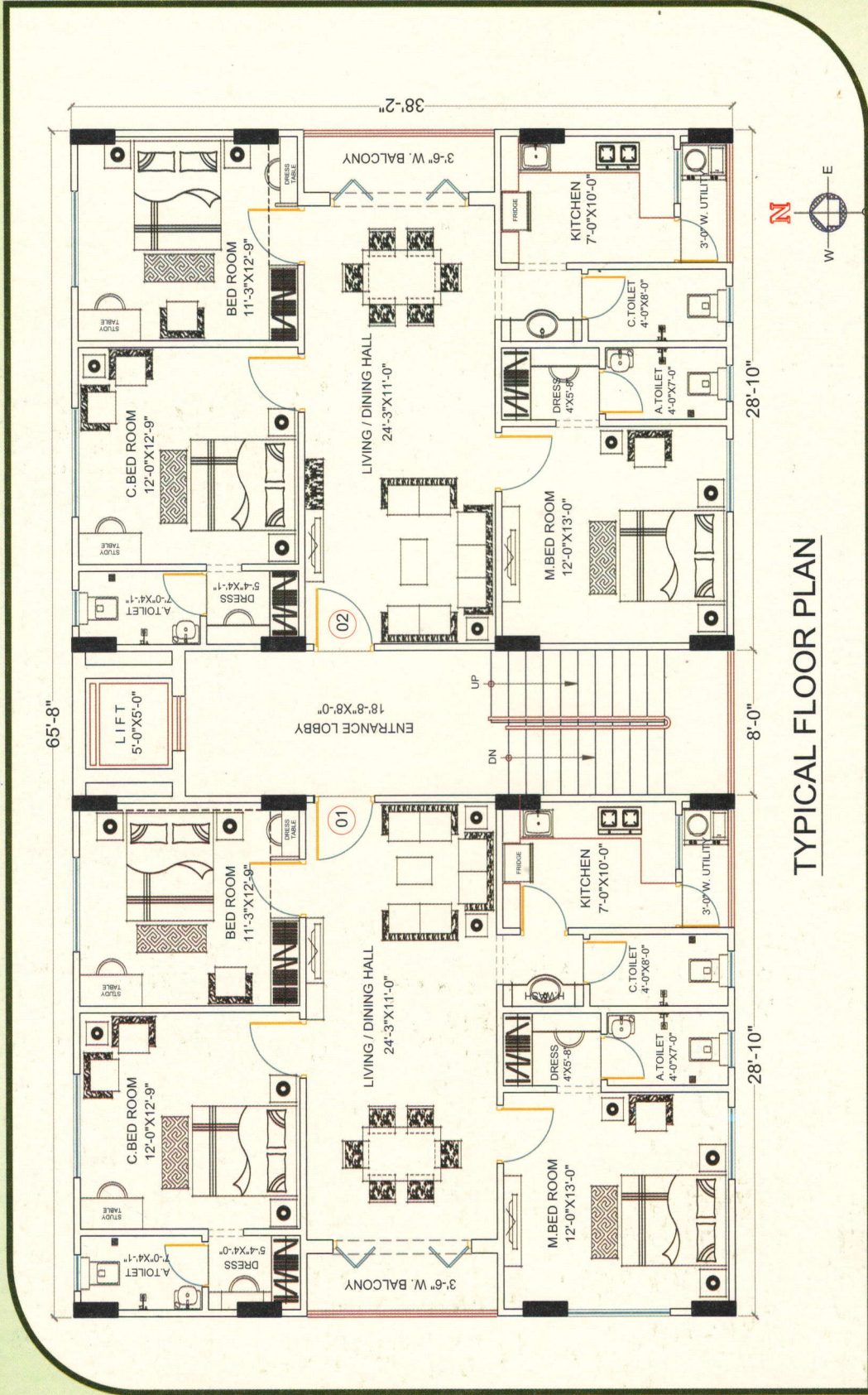


The investment of its kind

Bluestone is an exclusive destination spread in sprawling greenery enriched with world class amenities. To dwell in the ambience of luxury and richness of high standards is a dream for many of us. Located in a prime location, center for all the activities, Bluestone makes a constant attempt to turn your dreams into reality. With assurance in your heart, take a step forward to enjoy the most serene living ever!



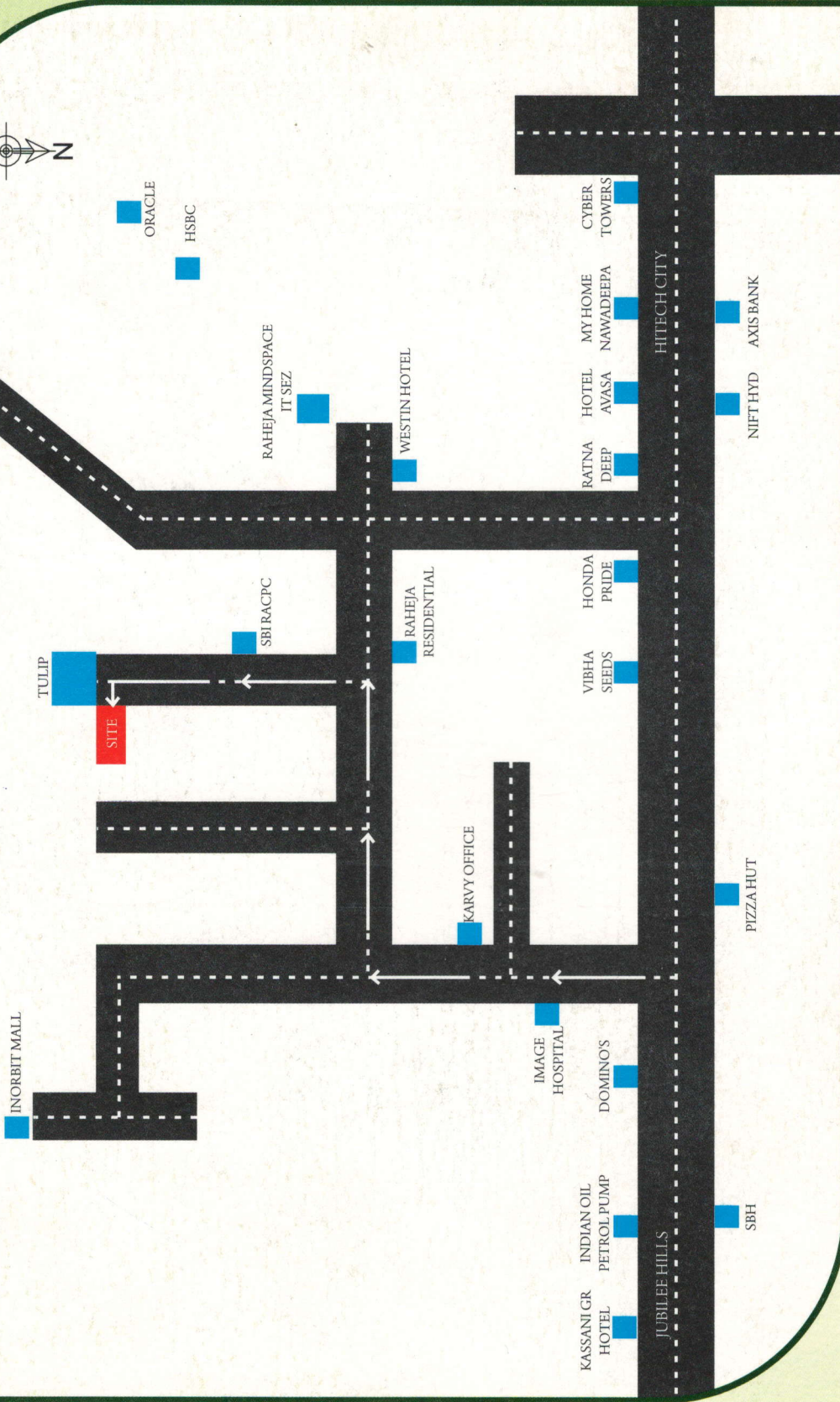
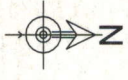
Typical Floor Plan



TYPICAL FLOOR PLAN

Plot Area 600 Syd. (501.6 Smt.)
 5 Floors 10 Flats

Location Plan



cielcreatives.com



Bluestones Infrastructure India Pvt. Ltd.

5th Floor, Royal Homes, 102-2-289/120,

Shanti Nagar, Masab Tank, Hyd. - 028, India

Tel. No.: +91-40-2331 1541

Mobile: +91 99016 77777

RAGA
ARCHITECTS



ZAKI & ASSOCIATES
STRUCTURAL ENGINEERS.